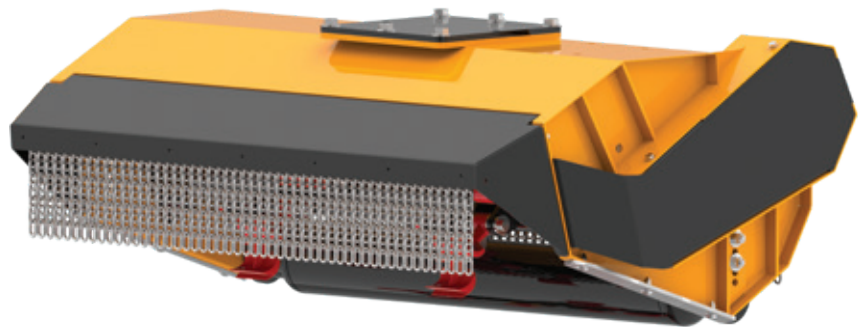


T11

For excavators 6.0-12.0 ton



MZ



FS



HF6
Ø max 8 cm
STANDARD EQUIPMENT



HF19
Ø max 12 cm
STANDARD EQUIPMENT



KF7
Ø max 6 cm

		T11 MZ130	T11 MZ160	T11 FS130
	ton	6.0-12.0	10.0-12.0	8.0-12.0
	cm/inch	130 52	160 63	130 52
	cm/inch	145x90x60 58x36x24	185x100x70 73x40x28	145x90x60 58x36x24
	kg/lbs	345 761	420 926	440 882
	cc	34-43-51	43-51	43-51
	oil - L/min (gal/min)	60-80-100 16-22-28	80-100 22-28	80-100 22-28
	bar/psi (min-max)	200-220 2.900-3.200	200-220 2.900-3.200	200-220 2.900-3.200
	transmission	1 (50 mm)	1 (55 mm)	1 (50 mm)
	rotor diameter cm/inch	46 18	46 18	46 18
		20	20	18

Technical features and standard equipment

- MZ Helicoidal Rotor with hammers austempered and cutting blade interchangeable
- FS Forestal flanged rotor with 360° rotating hammer
- Toothed high-performance belts transmission
- Internally reinforced double-case body with interspace
- Protective belts cover
- Strong hood with double sheet, removable for inspection
- Side skids adjustable on 3 positions to change the height of the cut (only on T11 MZ/FS 130)
- Feeler roller adjustable on 3 positions to change the height of the cut (T11 MZ 160 standard equipment, T11 MZ/FS 130 accessory in replacement of side skids)
- Inside Rotor Supports with "labyrinth" for the protection of the bearings from the impurities
- Double Row spherical or rollers adjustable bearings of 1st quality
- Valves block complete with priority valve for adjusting oil flow, anti-shock valve (pressure relief valve), anti-cavitation
- Cast iron gear motor
- Accident prevention chains protections according to EC directives

Accessories

- Mounting hitch (pins version) 4.1-8.0 ton
- Pins kit 4.1-8.0 ton
- Quick hitch 4.1-8.0
- Mounting hitch (pins version) 8.1-12.0 ton
- Pins kit 8.1-12.0 ton
- Quick hitch 8.1-12.0
- Mounting hitch (pins version) 12,1-16,0 ton
- Pins kit 12,1-16,0 ton
- Hoses kit Lg. 2,5 meters or Lg. on request
- Hoses kit Lg. 2,5 meters for piston motor
- Feeler roller, T11 130, no side skids
- Self-levelling support (+40kg), T11 130
- Self-levelling support (+60kg), T11 160
- Hydraulic front hood
- Piston motor (no valves block)
- Valves block 1" for piston motor
- Hydraulic rotation device (not self-levelling support)
- Valves block deduction, only anticavitation

Cast iron hydraulic gear motor range

		6.0-8.0	8.0-10.0	10.0-12.0
	ton			
	CC	34	43	51
	oil - L/min gal/min	60 16	80 22	100 28

Piston motor (accessory)

		8.0-11.0	11.0-12.0
	ton		
	CC	45	63
	oil - L/min gal/min	90 24	120 32